



For more information, kindly contact us at

☎ +603-7494 1017
 📠 +603-7494 1334

**Our Nuclear Medicine Centre is located at
 Basement, Tower C**

Operation Hours
 Monday - Friday: 8.30am - 5.30pm
 Saturday: 8.30am - 12.30pm
 Closed On Sundays & Public Holidays

Sunway Medical Centre Sdn Bhd

(341855-x)
 No. 5, Jalan Lagoon Selatan,
 Bandar Sunway,
 47500 Selangor Darul Ehsan,
 Malaysia.

☎ +603-7491 9191 / 5566 9191
 📠 +603-7491 8181
 ✉ smc@sunway.com.my

Find us on:



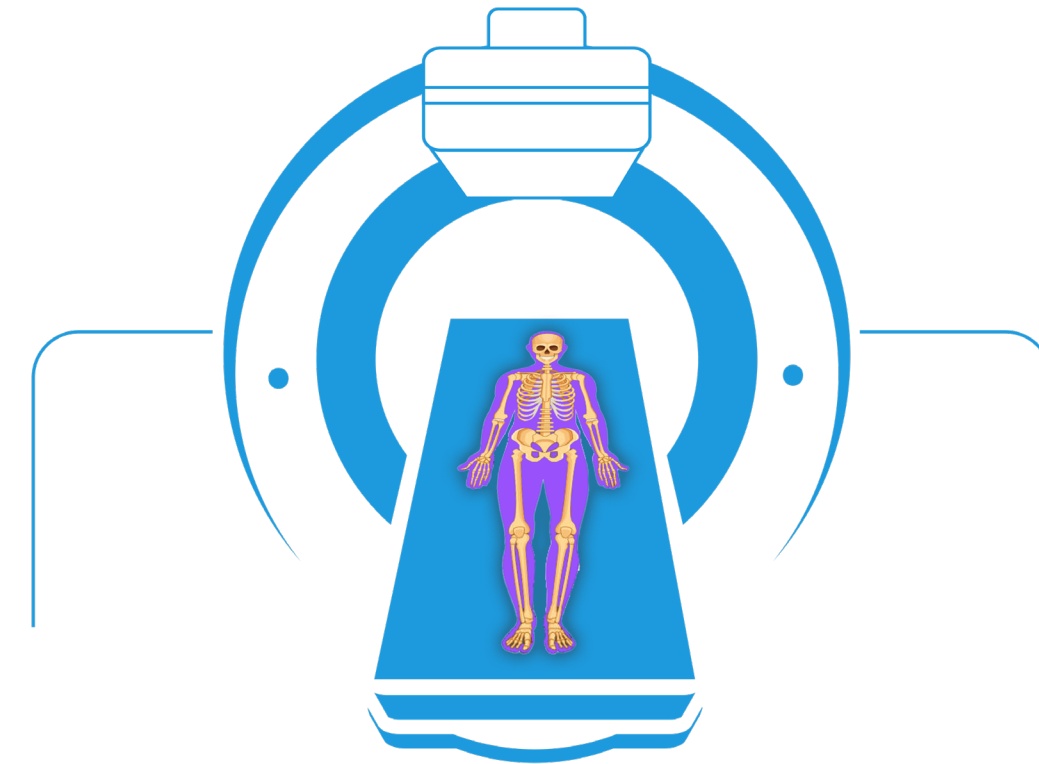
🌐 sunwaymedical.com

SEPT2022



RISKS AND LIMITATIONS?

- Before your scan, if you think you may be pregnant or you are breastfeeding, please inform us.
- You might get a bruise around the injection site.
- Side effects from the injection are not common, but some people may get a skin rash, headache, upset stomach, vertigo or dizziness.
- The injection contains a small amount of radioactive tracer which emits gamma rays (similar to x-rays). We use the lowest dose possible to enable us to have as much information as we can about your condition. The radiation dose is very low and is similar to the natural background radiation.



Hybrid Bone Scan xSPECT-CT

WHAT IS A BONE SCAN?



A bone scan is the most sensitive and commonly performed nuclear medicine test. Bone scans are used to detect sports injuries such as stress fractures and other bone ailments. These may include arthritis, avascular necrosis, septic joint, bone tumour, metastatic disease as well as unexplained bone pain.

Bone scans are highly sensitive that they enable nuclear medicine physicians to identify most of the skeletal pathology. For example, stress fractures can be detected in the absence of x-ray changes. In addition, images of your entire body or a certain symptomatic area can be taken to be examined in detail.



WHAT DO YOU NEED TO PREPARE FOR THE SCAN?

No special preparation is required for your scan however you should drink plenty of water after the scan.

HOW IS THE SCAN PERFORMED?

This test may take 4 to 5 hours to complete. When you arrive at the department, our Nuclear Medicine Physician will explain the entire procedure to you.

You will receive a radioactive tracer injection into a vein. The amount of radioactivity injected is very small and will have no adverse effect on you.



This radioactive tracer circulates around your body and is absorbed by your bones within 2 to 3 hours.

While waiting for the radioactive tracer to be absorbed, you are allowed to eat and drink. Drinking more water will help make the image clearer for our Nuclear Medicine Physician to examine. The radioactive tracer will not make you sleepy or prevent you from driving.

After 3 hours of the injection, you will be guided to lie on an imaging table with your arms by your side. A camera called the SPECT will perform the scan.



As part of the procedure, you may also undergo a low dose CT scan.

This scan usually takes about 40 minutes, and may take longer depending on the individual.

The scan does not hurt, but it is important that you keep still. If you experience pain during the scan, please inform us and we will try to make it as comfortable as possible for you.

WHAT HAPPENS AFTER THE SCAN?

You can eat normally and are advised to drink plenty of fluids for the rest of the day. This will help remove the radioactivity from your body. The radioactivity should be completely removed within 24 hours.

Please avoid prolonged close contact with children or pregnant women for the rest of the day. This is to avoid exposing them to unnecessary radiation.

WHEN WILL YOU GET THE RESULTS?

Our Nuclear Medicine Physician's report will be written shortly after your scan but may take some time to reach your referring doctor or be ready for collection. It is normally available in less than 2 working days.